



Greetings, Maker...
Welcome to the Robo family!

We're thrilled you're here and want to extend a big thank you for your purchase.

Whether the making happens for serious projects that demand results — or for your personal creative endeavors — this is the tool engineered to unlock every facet of your potential.

So, go ahead and make greatness. Make every detail come to life. Make it all happen — now.

Make the imagined.

Register your Robo R2

Register your Robo R2 to activate your warranty at:
robo3d.com/register

See full terms and conditions of warranty at: robo3d.com/warranty

24/7 Customer
Service Support

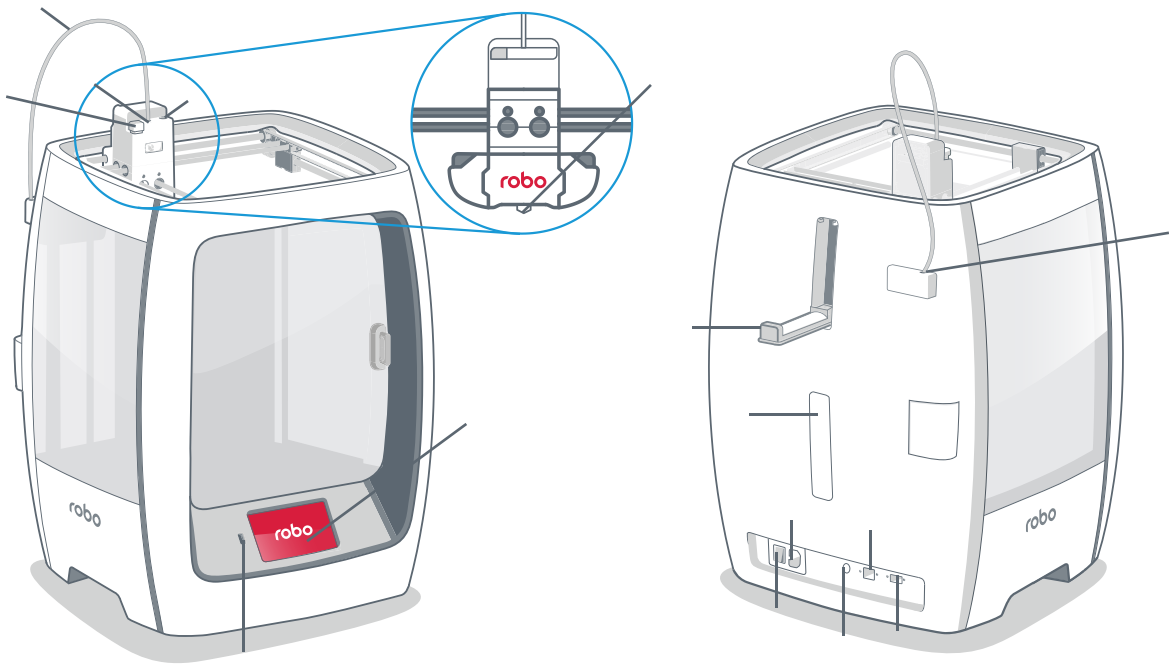
Got questions or need help with your Robo product?

Call us anytime — day or night **844-476-2633**
or email at help@robo3d.com



Meet Robo R2

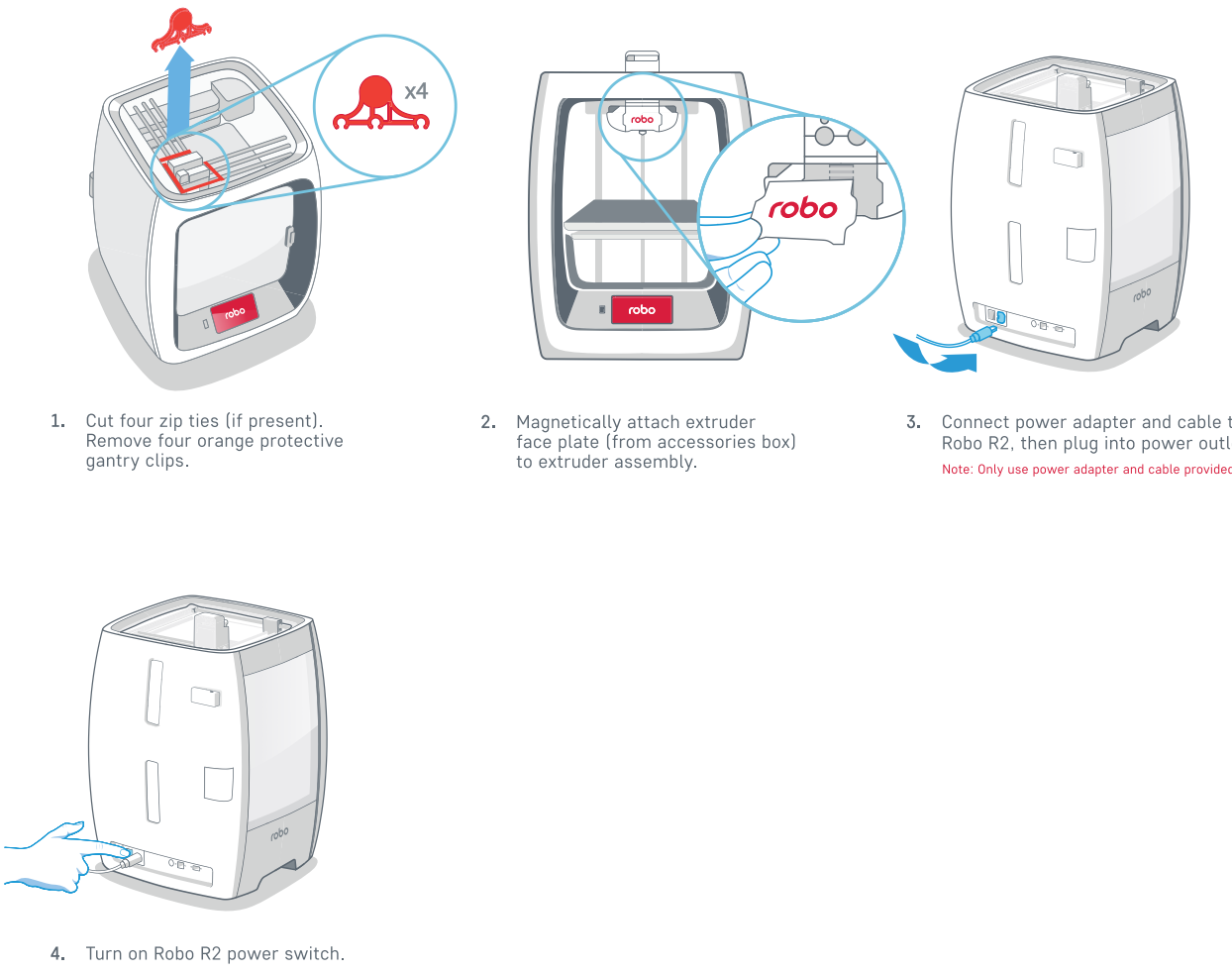
- | | |
|---------------------------------------|---------------------------|
| A Filament feed hole 1 | H Filament sensor block |
| B Filament feed hole 2 | I Filament spool holder 1 |
| (for second extruder—sold separately) | J Filament spool holder 2 |
| C Filament release button | K Power switch |
| D Extruder nozzle | L Power in |
| E Filament feed tube | M Ethernet port |
| F Interactive touchscreen | N USB port |
| G USB port | O Auxiliary port |



© 2017 Robo 3D Inc., San Diego, California. All rights reserved. Robo, Robo 3D, Robo R2, Robo R2 are trademarks or registered trademarks and are the properties of Robo 3D Inc. Registered in the USA and other countries. Apple and the Apple logo are trademarks of Apple Inc., registered in the U.S. and other countries. App Store is a service mark of Apple Inc. © 2017 Google Inc. All rights reserved. Chromebook is a trademark of Google Inc.

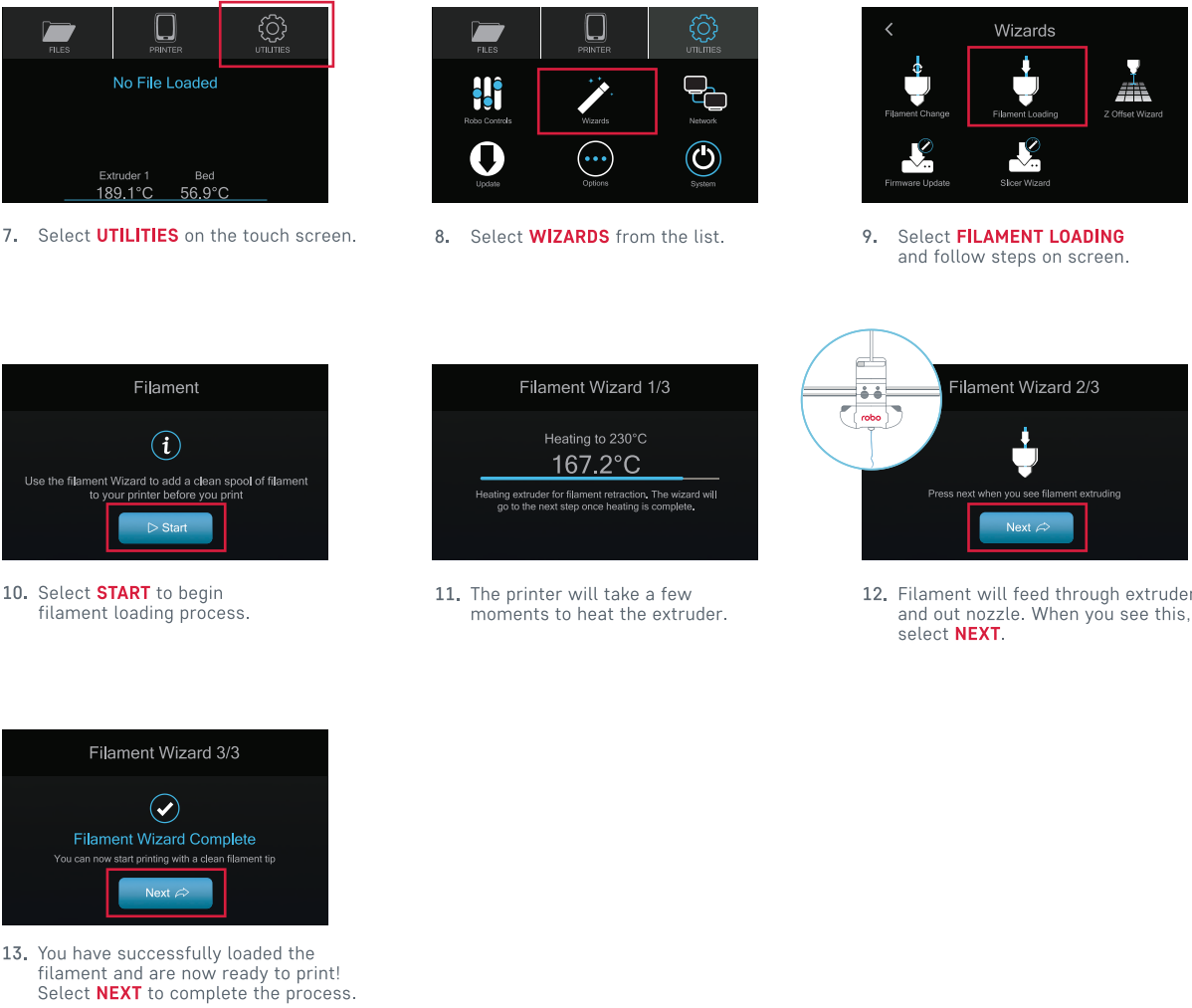
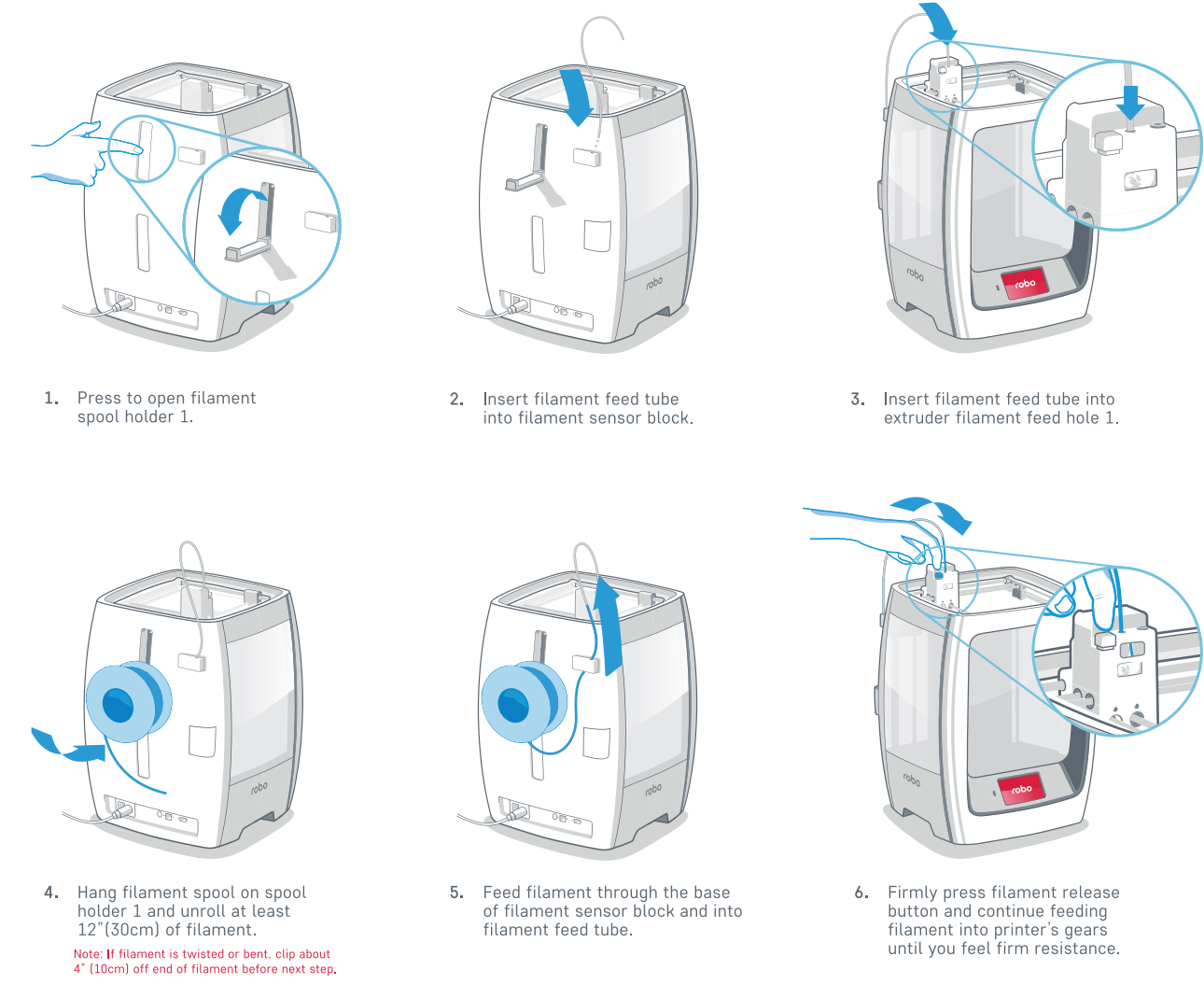
Step 1 Initial set-up

You can also watch how to set up Robo R2:
robo3d.com/getstarted



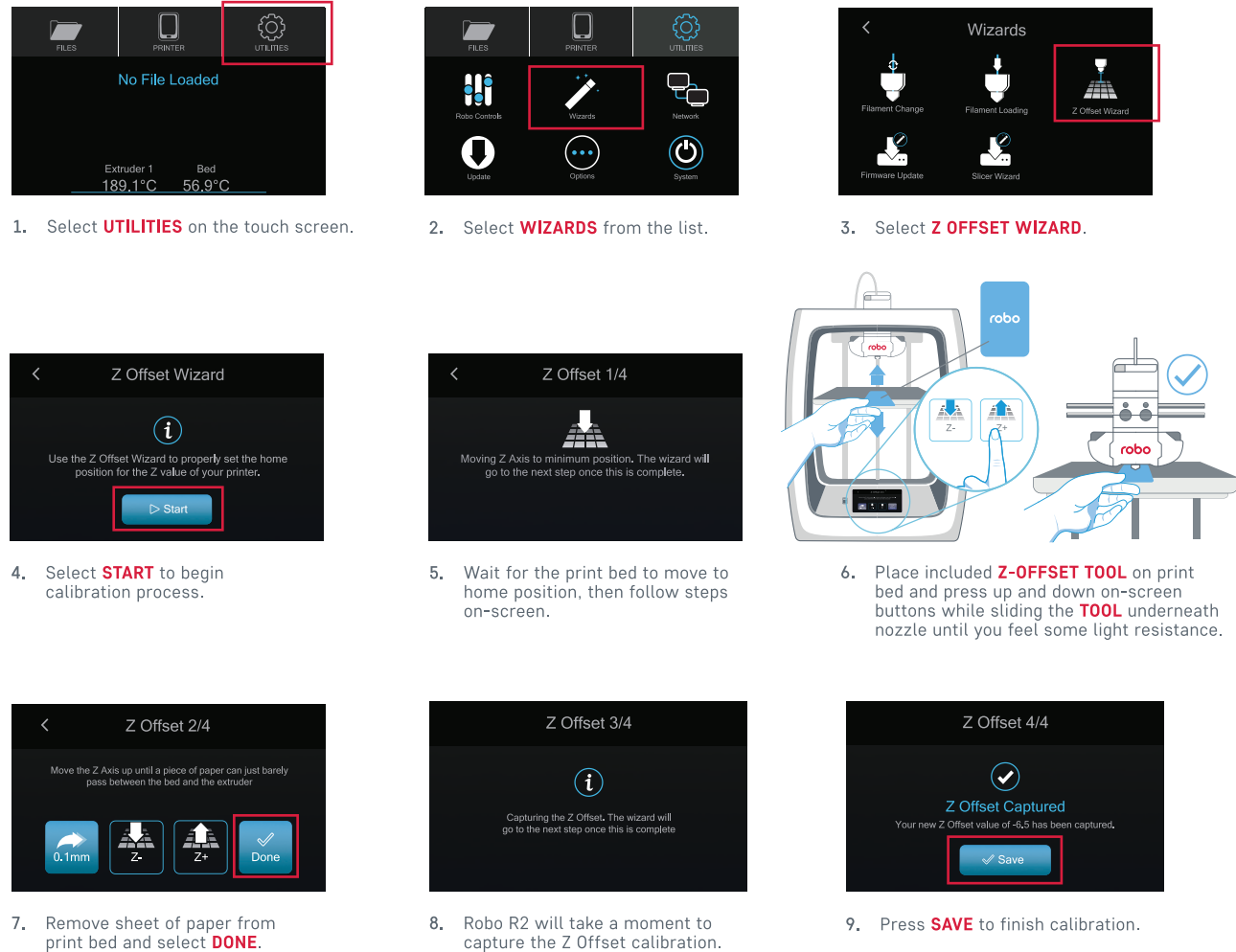
000-1025-000 | March 2018

Step 2 Load filament

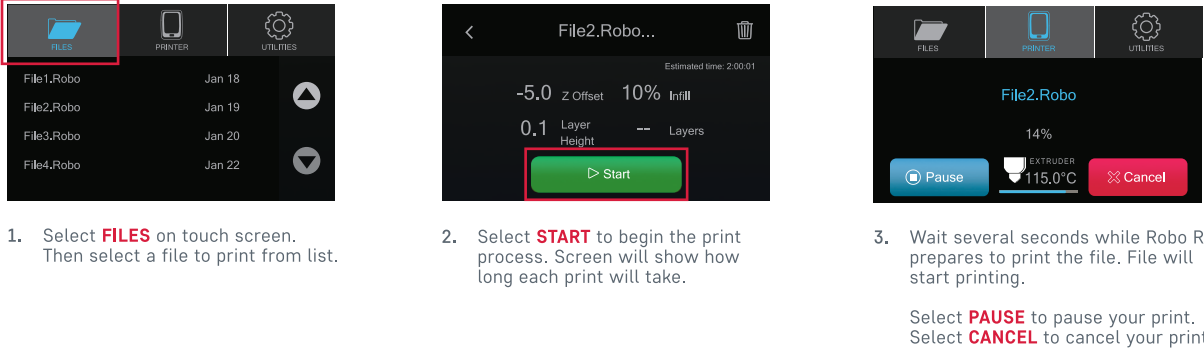


Step 3 Calibration

Ensure nozzle is clean prior to starting calibration.

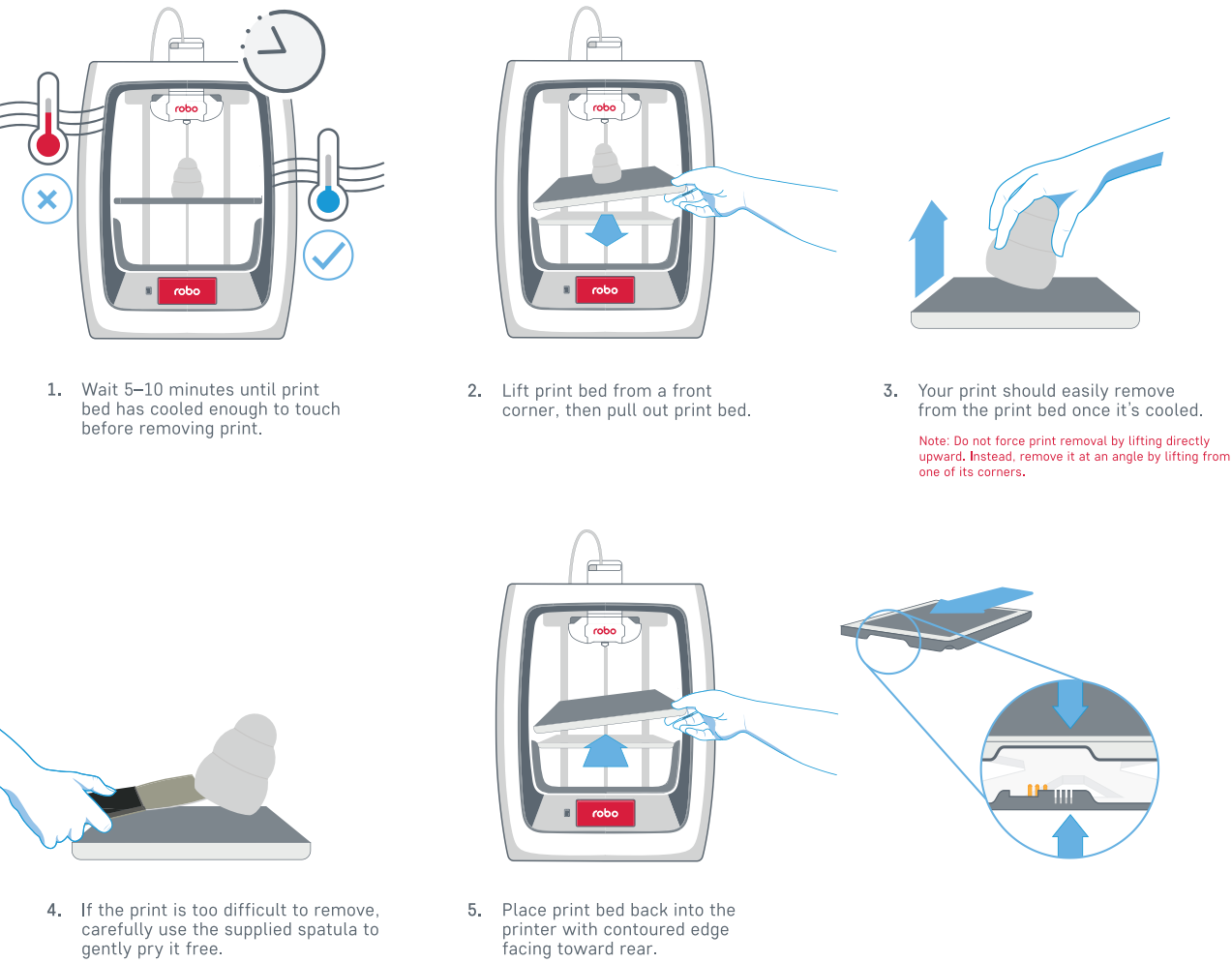


Step 4 Test print



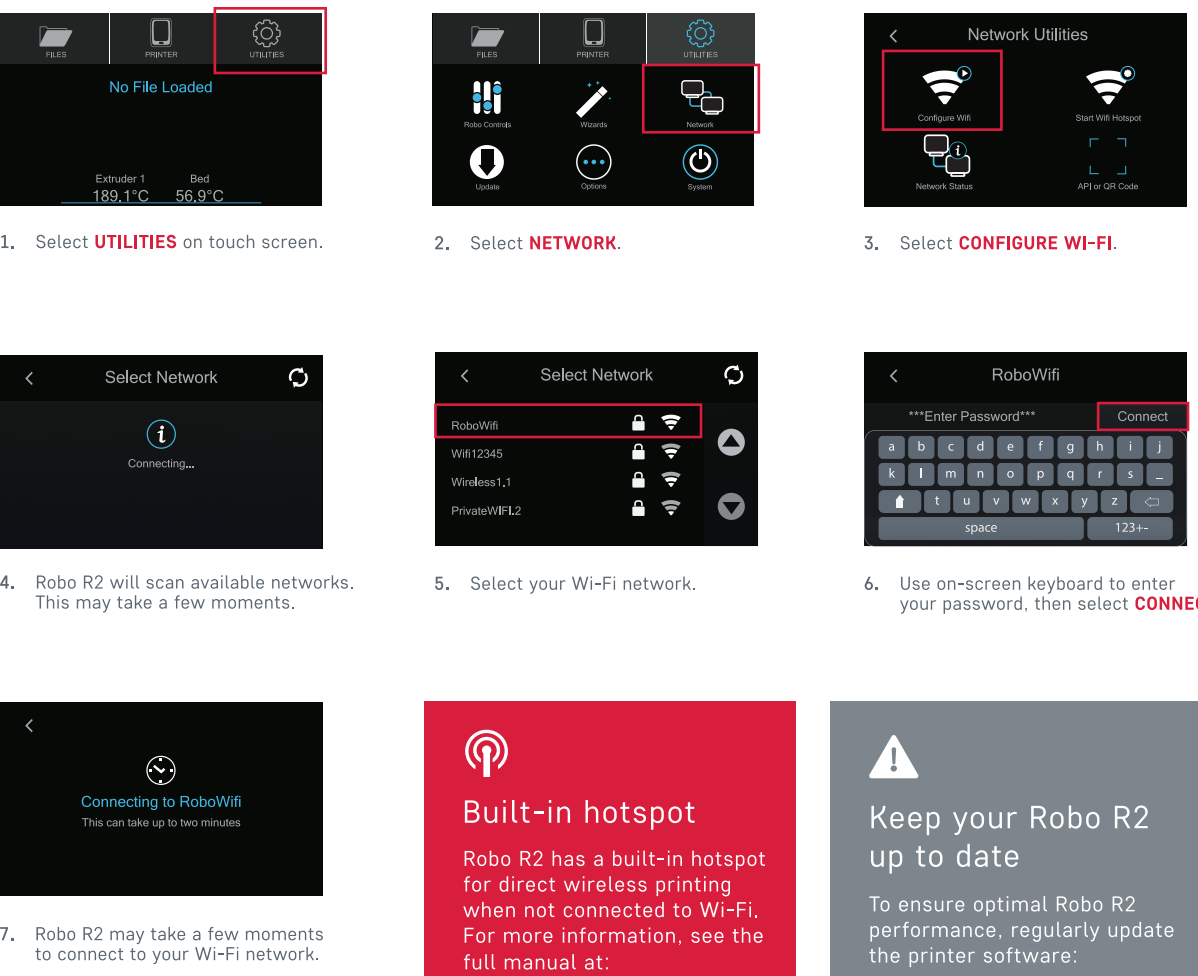
If you have trouble printing, contact Robo Customer Service for support.
844-476-2633

Step 5 Removing a print



Step 6 Connect to Wi-Fi

It is highly recommended to connect Robo R2 to Wi-Fi — this allows you to directly print from the Robo App or Chromebook.



Built-in hotspot

Robo R2 has a built-in hotspot for direct wireless printing when not connected to Wi-Fi. For more information, see the full manual at:
robo3d.com/manual

Keep your Robo R2 up to date

To ensure optimal Robo R2 performance, regularly update the printer software:
Utilities > Updates > Install

Control each print with the Robo App

Download the free Robo App and easily control each print right from your Apple iOS device.

- Multiple printers, one app**
Control multiple prints and printers.
- Cloud storage integration**
Connect to cloud based libraries and access thousands of 3D models.
- View on-board camera**
Watch and record your prints in real time.
- Monitor print progress**
Watch every step of your print's progress, view print bed and extruder temperatures — plus, quickly pause and cancel prints.
- In-app purchases**
Purchase filaments, accessories, print kits and more.
- App support and guides**
Access other getting started guides and the Robo support center.



Web interface and Chromebook control

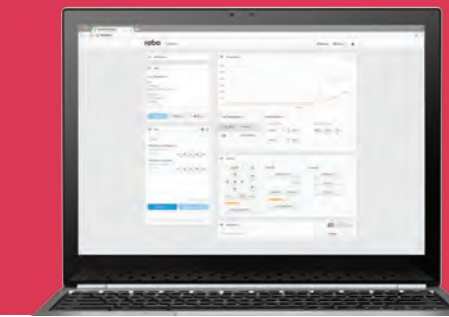
Easily print from and control Robo R2 with your Chromebook or any web browser. Find out how:

robo3d.com/chromebook

To access, first ensure your Robo R2 is connected to Wi-Fi, then connect to your Robo R2 from any web-enabled device on the same Wi-Fi network by going to the Robo R2 IP address. You can find the IP on your Robo R2 in:

Utilities > Network > Network Status > IP

Type in IP number into the web browser address bar and your browser will connect to your Robo R2.



Share everything you make

Connect with [@robo3d](https://twitter.com/robo3d) #robo3d and show the world what you're up to!



Print from USB drive

You can copy files from your computer to the supplied USB drive and print them from your Robo R2. Find out how:

robo3d.com/usbdrive

Make more with these awesome online resources

Download high-quality models from amazing designers!

myminifactory.com
thingiverse.com
pinshape.com

Get the latest news and updates — and sign-up for our Robo newsletter.

robo3d.com

Owner's manual

To learn more about your Robo R2 and take a closer look at its full capabilities, check out the online Owner's Manual:

robo3d.com/manual